



**HIZ**

**ASANSÖR**

[www.hizasansor.com](http://www.hizasansor.com)



[www.hizasansor.com](http://www.hizasansor.com)

2014 yılında kurulan HIZ ASANSÖR, paket asansör ve ekipmanları üretimi ve satışı yapmaktadır. Firmamız kısa sürede gerek müşteri portföyü gerekse güvenilir ve kaliteli iş ortaklığı ile Türkiye'nin önde gelen firmaları arasındaki yerini almıştır. Yurt içinde geniş bir hizmet yelpazesi oluşturan firmamız, müşterilerinden aldığı güvenle son yıllarda ihracat çalışmalarına da başlamış, yurtiçinde sağladığı başarıyı yurtdışında da göstermek üzere çalışmalarını sürdürmektedir.

Kabin, süspansiyon ve şase üreten firmamız, ayrıca Türk asansör sektörünün önemli markaları ile de işbirliği içerisindedir. A'dan Z'ye tüm asansör malzemelerini müşterilerinin hizmetine sunan HIZ ASANSÖR, yüksek kalite, zamanında teslimat prensibi ve profesyonel ekibi ile sektöre en iyi hizmeti sunmak için faaliyetlerine devam etmektedir.

Founded in 2014, HIZ ELEVATOR manufactures and sells package elevators and equipment. Our company has taken its place among the short time required both reliable and high quality customer portfolio partnered with Turkey's leading companies. Our company, which creates a wide range of services in the country, has started export activities in recent years with the trust of its customers, and continues to work to show the success it has achieved domestically.

Our company, which produces cabin, suspension and chassis, also cooperates with the important brands of the Turkish elevator industry. Offering all elevator materials from A to Z to the service of its customers, HIZ ASANSÖR continues its activities to provide the best service to the sector with its high quality, timely delivery principle and professional team.



◀ 04  
KABİNLER  
CABINS

# ▶ İÇİNDEKİLER INDEX

24 ▶  
OTOMATİK  
KAPILAR  
AUTOMATIC DOORS



28 ▶  
MANUEL  
KAPILAR  
MANUEL DOORS



◀ 30  
SİSTEMLER  
SYSTEMS

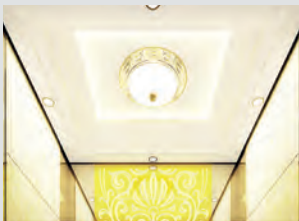


◀ 32  
BUTONLAR  
BUTTONS

36 ▶  
KUMANDA  
PANOLARI  
CONTROL PANELS



38 ▶  
MAKİNE  
MOTORLAR  
MACHINE MOTORS

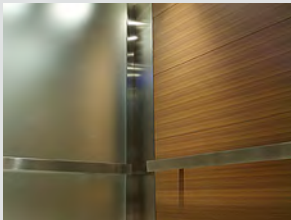


◀ 40  
TAVAN  
CEILING



◀ 42  
TABAN  
BASE

44 ▶  
KAPLAMA  
COVERING



45 ▶  
DİJİTAL BASKILAR  
DIGITAL PRINTS



◀ 46  
YEDEK PARÇA  
SPARE PARTS



◀ 48  
MONŞARJ  
MONCHARGE



### ÖZELLİKLER

- † Duvarlar 1,5 mm galvanizli sac
- † Laninant 18 mm radüslü
- † Paslanmaz kabinler 304 kalite
- † Komple lazer tavan
- † Cam kabinlerde farklı renk ve desen uygulamaları
- † Cam ve led tavan seçeneği
- † PVC anti bakteriyel tavan
- † 20 mm doğal granit taban seçeneği
- † Farklı tavan seçenekleri
- † Çalıştırılmaya hazır aydınlatma ve fan
- † Titreşimi önleyen özel bükümler ve takozlar
- † Tercihe bağlı sandık ambalaj

## KABİNLER CABINS

### FEATURES

- † 1,5 mm galvanized sheet walls
- † 18 mm radius laminate cars
- † Stainless steel cars of 304 quality
- † Complete lazer ceiling
- † Various color and pattern options for glass cars
- † Range of glass and LED ceilings
- † Antibacterial PVC floor
- † Range of 20 mm natural granite floors
- † Range of various floors
- † Lighting and fan ready for operation
- † Special bends and wedges of vibration preventing
- † Optional case packing

# HIZ

## ASANSÖR



HZC 101

HZC 102



HZC 103



HZC 104



HZC 105



HZC 106



HZC 107



### ÖZELLİKLER

- † Duvarlar 1,5 mm galvanizli sac
- † Laninant 18 mm radüslü
- † Paslanmaz kabinler 304 kalite
- † Komple lazer tavan
- † Cam kabinlerde farklı renk ve desen uygulamaları
- † Cam ve led tavan seçeneği
- † PVC anti bakteriyel tavan
- † 20 mm doğal granit taban seçeneği
- † Farklı tavan seçenekleri
- † Çalıştırılmaya hazır aydınlatma ve fan
- † Titreşimi önleyen özel bükümler ve takozlar
- † Tercihe bağlı sandık ambalaj

## KABİNLER CABINS

### FEATURES

- † 1,5 mm galvanized sheet walls
- † 18 mm radius laminate cars
- † Stainless steel cars of 304 quality
- † Complete lazer ceiling
- † Various color and pattern options for glass cars
- † Range of glass and LED ceilings
- † Antibacterial PVC floor
- † Range of 20 mm natural granite floors
- † Range of various floors
- † Lighting and fan ready for operation
- † Special bends and wedges of vibration preventing
- † Optional case packing

# HIZ

## ASANSÖR



HZC 201

HZC 202



HZC 203



HZC 204



HZC 205



HZC 206



HZC 207



### ÖZELLİKLER

- † Duvarlar 1,5 mm galvanizli sac
- † Laminant 18 mm radüslü
- † Paslanmaz kabinler 304 kalite
- † Komple lazer tavan
- † Cam kabinlerde farklı renk ve desen uygulamaları
- † Cam ve led tavan seçeneği
- † PVC anti bakteriyel tavan
- † 20 mm doğal granit taban seçeneği
- † Farklı tavan seçenekleri
- † Çalıştırılmaya hazır aydınlatma ve fan
- † Titreşimi önleyen özel bükümler ve takozlar
- † Tercihe bağlı sandık ambalaj

## KABİNLER CABINS

### FEATURES

- † 1,5 mm galvanized sheet walls
- † 18 mm radius laminate cars
- † Stainless steel cars of 304 quality
- † Complete lazer ceiling
- † Various color and pattern options for glass cars
- † Range of glass and LED ceilings
- † Antibacterial PVC floor
- † Range of 20 mm natural granite floors
- † Range of various floors
- † Lighting and fan ready for operation
- † Special bends and wedges of vibration preventing
- † Optional case packing

# HIZ

## ASANSÖR



HZC 301

HZC 302



HZC 303



HZC 304



HZC 305



HZC 306



HZC 307



### ÖZELLİKLER

- † Duvarlar 1,5 mm galvanizli sac
- † Laminant 18 mm radüslü
- † Paslanmaz kabinler 304 kalite
- † Komple lazer tavan
- † Cam kabinlerde farklı renk ve desen uygulamaları
- † Cam ve led tavan seçeneği
- † PVC anti bakteriyel tavan
- † 20 mm doğal granit taban seçeneği
- † Farklı tavan seçenekleri
- † Çalıştırılmaya hazır aydınlatma ve fan
- † Titreşimi önleyen özel bükümler ve takozlar
- † Tercihe bağlı sandık ambalaj

## KABİNLER CABINS

### FEATURES

- † 1,5 mm galvanized sheet walls
- † 18 mm radius laminate cars
- † Stainless steel cars of 304 quality
- † Complete lazer ceiling
- † Various color and pattern options for glass cars
- † Range of glass and LED ceilings
- † Antibacterial PVC floor
- † Range of 20 mm natural granite floors
- † Range of various floors
- † Lighting and fan ready for operation
- † Special bends and wedges of vibration preventing
- † Optional case packing

# HIZ

## ASANSÖR



HZC 401

HZC 402



HZC 403



HZC 404



HZC 405



HZC 406



HZC 407



### ÖZELLİKLER

- † Duvarlar 1,5 mm galvanizli sac
- † Laninant 18 mm radüslü
- † Paslanmaz kabinler 304 kalite
- † Komple lazer tavan
- † Cam kabinlerde farklı renk ve desen uygulamaları
- † Cam ve led tavan seçeneği
- † PVC anti bakteriyel tavan
- † 20 mm doğal granit taban seçeneği
- † Farklı tavan seçenekleri
- † Çalıştırılmaya hazır aydınlatma ve fan
- † Titreşimi önleyen özel bükümler ve takozlar
- † Tercihe bağlı sandık ambalaj

## KABİNLER CABINS

### FEATURES

- † 1,5 mm galvanized sheet walls
- † 18 mm radius laminate cars
- † Stainless steel cars of 304 quality
- † Complete lazer ceiling
- † Various color and pattern options for glass cars
- † Range of glass and LED ceilings
- † Antibacterial PVC floor
- † Range of 20 mm natural granite floors
- † Range of various floors
- † Lighting and fan ready for operation
- † Special bends and wedges of vibration preventing
- † Optional case packing

# HIZ

## ASANSÖR



HZC 501

HZC 502



HZC 503



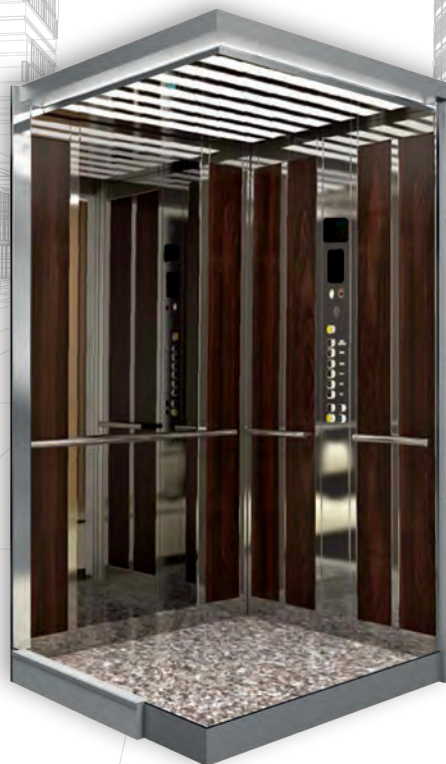
HZC 504



HZC 505



HZC 506



HZC 507



### ÖZELLİKLER

- † Duvarlar 1,5 mm galvanizli sac
- † Laminant 18 mm radüslü
- † Paslanmaz kabinler 304 kalite
- † Komple lazer tavan
- † Cam kabinlerde farklı renk ve desen uygulamaları
- † Cam ve led tavan seçeneği
- † PVC anti bakteriyel tavan
- † 20 mm doğal granit taban seçeneği
- † Farklı tavan seçenekleri
- † Çalıştırılmaya hazır aydınlatma ve fan
- † Titreşimi önleyen özel bükümler ve takozlar
- † Tercihe bağlı sandık ambalaj

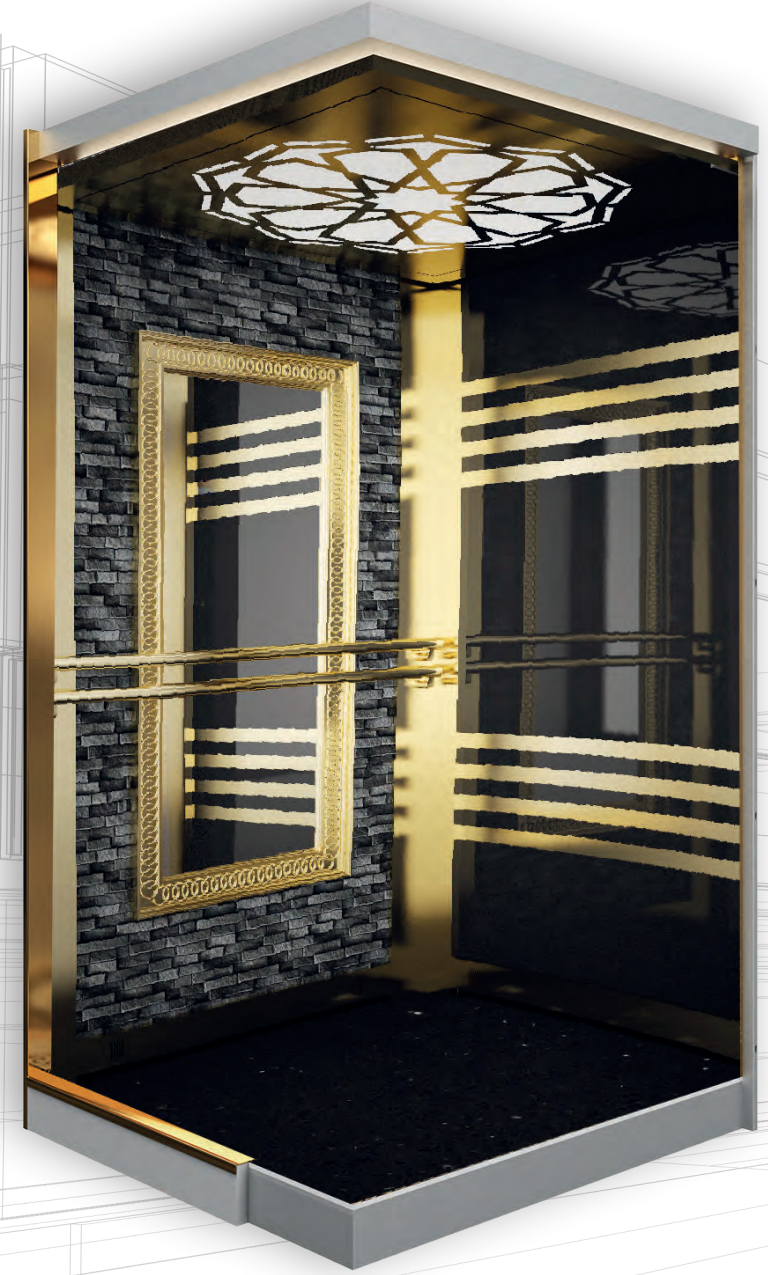
## KABİNLER CABINS

### FEATURES

- † 1,5 mm galvanized sheet walls
- † 18 mm radius laminate cars
- † Stainless steel cars of 304 quality
- † Complete lazer ceiling
- † Various color and pattern options for glass cars
- † Range of glass and LED ceilings
- † Antibacterial PVC floor
- † Range of 20 mm natural granite floors
- † Range of various floors
- † Lighting and fan ready for operation
- † Special bends and wedges of vibration preventing
- † Optional case packing

# HIZ

## ASANSÖR



HZC 601

HZC 602



HZC 603



HZC 604



HZC 605



HZC 606



HZC 607



### ÖZELLİKLER

- † Duvarlar 1,5 mm galvanizli sac
- † Laninant 18 mm radüslü
- † Paslanmaz kabinler 304 kalite
- † Komple lazer tavan
- † Cam kabinlerde farklı renk ve desen uygulamaları
- † Cam ve led tavan seçeneği
- † PVC anti bakteriyel tavan
- † 20 mm doğal granit taban seçeneği
- † Farklı tavan seçenekleri
- † Çalıştırılmaya hazır aydınlatma ve fan
- † Titreşimi önleyen özel bükümler ve takozlar
- † Tercihe bağlı sandık ambalaj

## KABİNLER CABINS

### FEATURES

- † 1,5 mm galvanized sheet walls
- † 18 mm radius laminate cars
- † Stainless steel cars of 304 quality
- † Complete lazer ceiling
- † Various color and pattern options for glass cars
- † Range of glass and LED ceilings
- † Antibacterial PVC floor
- † Range of 20 mm natural granite floors
- † Range of various floors
- † Lighting and fan ready for operation
- † Special bends and wedges of vibration preventing
- † Optional case packing

# HIZ

## ASANSÖR



HZC 701

HZC 702



HZC 703



HZC704



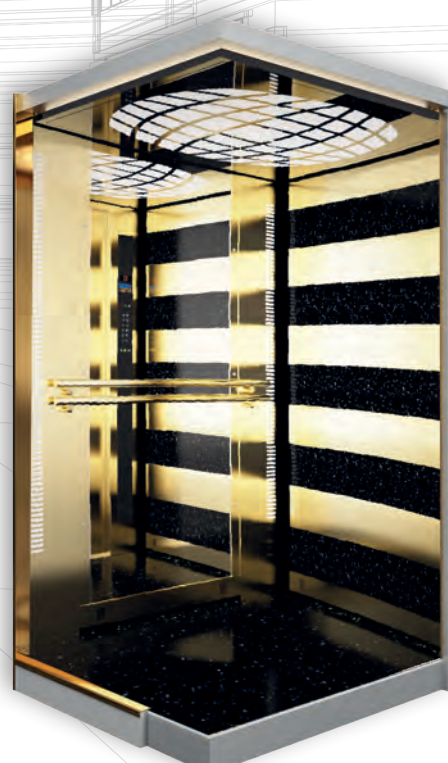
HZC 705



HZC706



HZC 707



### ÖZELLİKLER

- † Duvarlar 1,5 mm galvanizli sac
- † Laminant 18 mm radüslü
- † Paslanmaz kabinler 304 kalite
- † Komple lazer tavan
- † Cam kabinlerde farklı renk ve desen uygulamaları
- † Cam ve led tavan seçeneği
- † PVC anti bakteriyel tavan
- † 20 mm doğal granit taban seçeneği
- † Farklı tavan seçenekleri
- † Çalıştırılmaya hazır aydınlatma ve fan
- † Titreşimi önleyen özel bükümler ve takozlar
- † Tercihe bağlı sandık ambalaj

## KABİNLER CABINS

### FEATURES

- † 1,5 mm galvanized sheet walls
- † 18 mm radius laminate cars
- † Stainless steel cars of 304 quality
- † Complete lazer ceiling
- † Various color and pattern options for glass cars
- † Range of glass and LED ceilings
- † Antibacterial PVC floor
- † Range of 20 mm natural granite floors
- † Range of various floors
- † Lighting and fan ready for operation
- † Special bends and wedges of vibration preventing
- † Optional case packing

# HIZ

## ASANSÖR



HZC 801

HZC 802



HZC 803



HZC804



HZC 805



HZC806



HZC 807



### ÖZELLİKLER

- † Duvarlar 1,5 mm galvanizli sac
- † Laminant 18 mm radüslü
- † Paslanmaz kabinler 304 kalite
- † Komple lazer tavan
- † Cam kabinlerde farklı renk ve desen uygulamaları
- † Cam ve led tavan seçeneği
- † PVC anti bakteriyel tavan
- † 20 mm doğal granit taban seçeneği
- † Farklı tavan seçenekleri
- † Çalıştırılmaya hazır aydınlatma ve fan
- † Titreşimi önleyen özel bükümler ve takozlar
- † Tercihe bağlı sandık ambalaj

## KABİNLER CABINS

### FEATURES

- † 1,5 mm galvanized sheet walls
- † 18 mm radius laminate cars
- † Stainless steel cars of 304 quality
- † Complete lazer ceiling
- † Various color and pattern options for glass cars
- † Range of glass and LED ceilings
- † Antibacterial PVC floor
- † Range of 20 mm natural granite floors
- † Range of various floors
- † Lighting and fan ready for operation
- † Special bends and wedges of vibration preventing
- † Optional case packing

# HIZ

## ASANSÖR



HZC 901

HZC 902



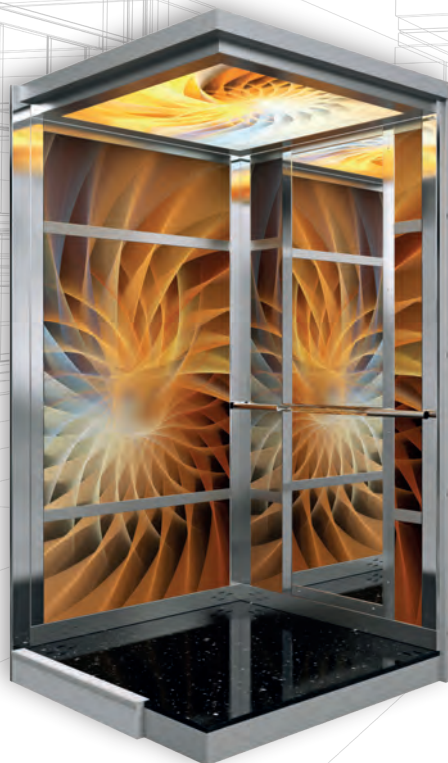
HZC 903



HZC 904



HZC 905



HZC 906



HZC 907



### ÖZELLİKLER

- † Duvarlar 1,5 mm galvanizli sac
- † Laninant 18 mm radüslü
- † Paslanmaz kabinler 304 kalite
- † Komple lazer tavan
- † Cam kabinlerde farklı renk ve desen uygulamaları
- † Cam ve led tavan seçeneği
- † PVC anti bakteriyel tavan
- † 20 mm doğal granit taban seçeneği
- † Farklı tavan seçenekleri
- † Çalıştırılmaya hazır aydınlatma ve fan
- † Titreşimi önleyen özel bükümler ve takozlar
- † Tercihe bağlı sandık ambalaj

## KABİNLER CABINS

### FEATURES

- † 1,5 mm galvanized sheet walls
- † 18 mm radius laminate cars
- † Stainless steel cars of 304 quality
- † Complete lazer ceiling
- † Various color and pattern options for glass cars
- † Range of glass and LED ceilings
- † Antibacterial PVC floor
- † Range of 20 mm natural granite floors
- † Range of various floors
- † Lighting and fan ready for operation
- † Special bends and wedges of vibration preventing
- † Optional case packing

# HIZ

## ASANSÖR



PC 101



PC 102



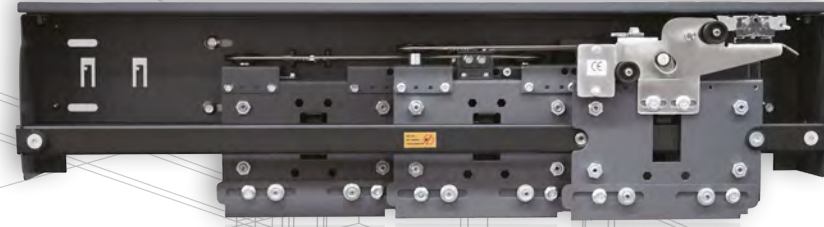
HC 101

KAT-KABİN  
KAPILARI

OTOMATİK KAPILAR  
AUTOMATIC DOORS

LANDING-CAR  
DOORS

**HIZ**  
ASANSÖR



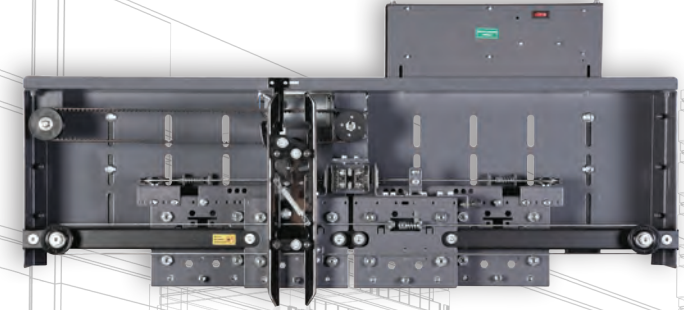
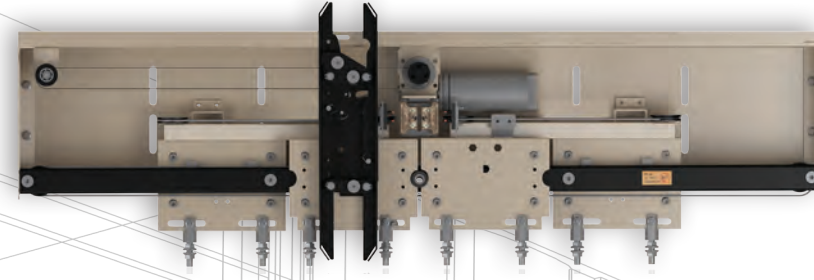


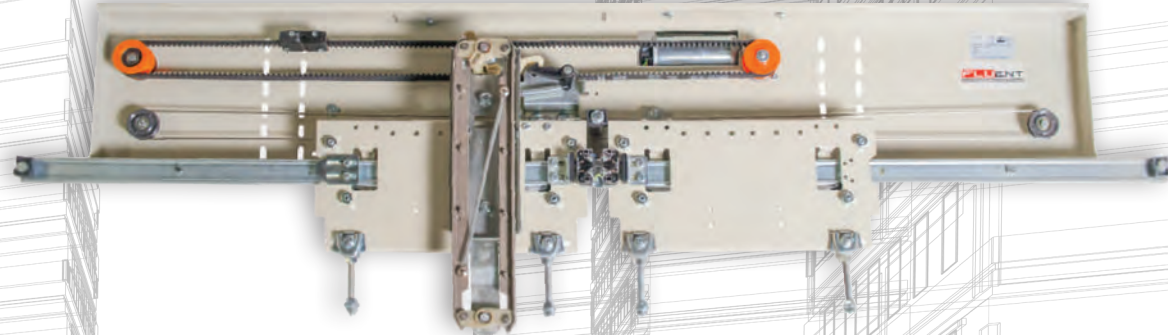
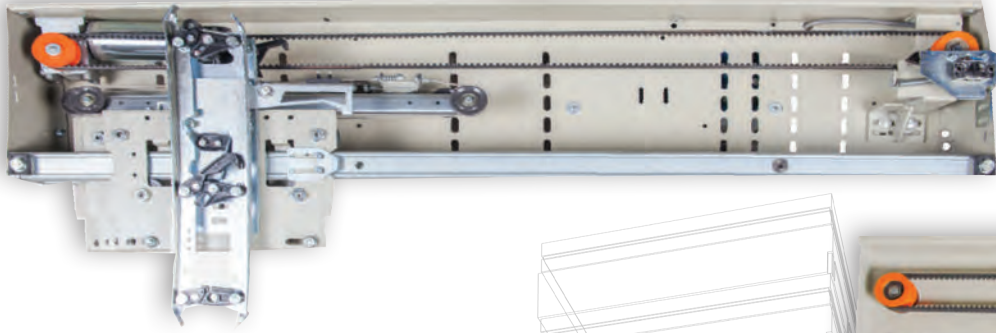
KAT-KABİN  
KAPILARI

OTOMATİK KAPILAR  
AUTOMATIC DOORS

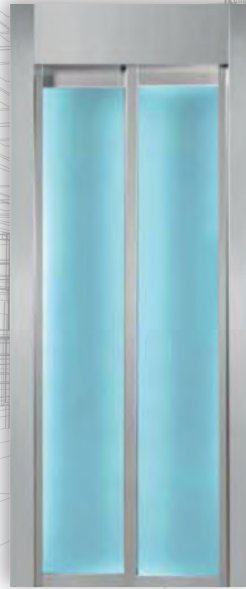
LANDING-CAR  
DOORS

**HIZ**  
ASANSÖR





# CAM KAPI GLASS DOOR



CG 101

CG 102

CG 103

CG 104

CG 105

CG 106

CG 107

**MANUEL KAPILAR**  
MANUEL DOORS

**HIZ**  
ASANSÖR

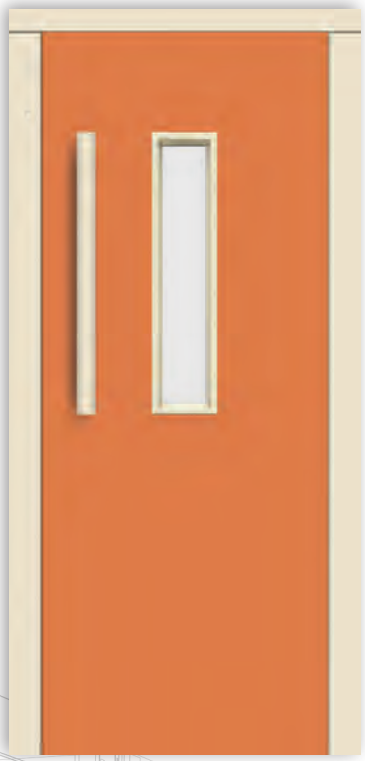


CSK 101

CSK 105



CSK 102



CSK 106



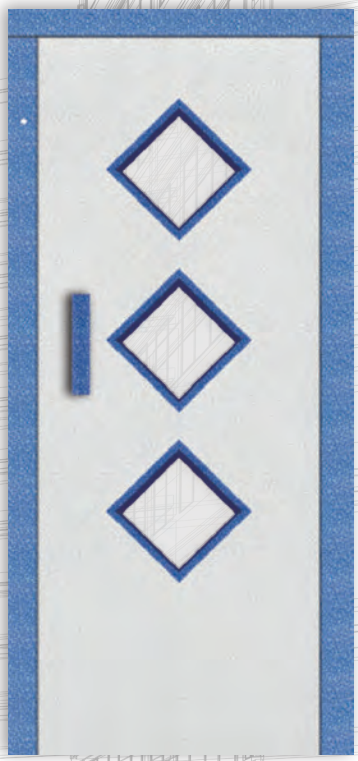
CSK 103



CSK 107

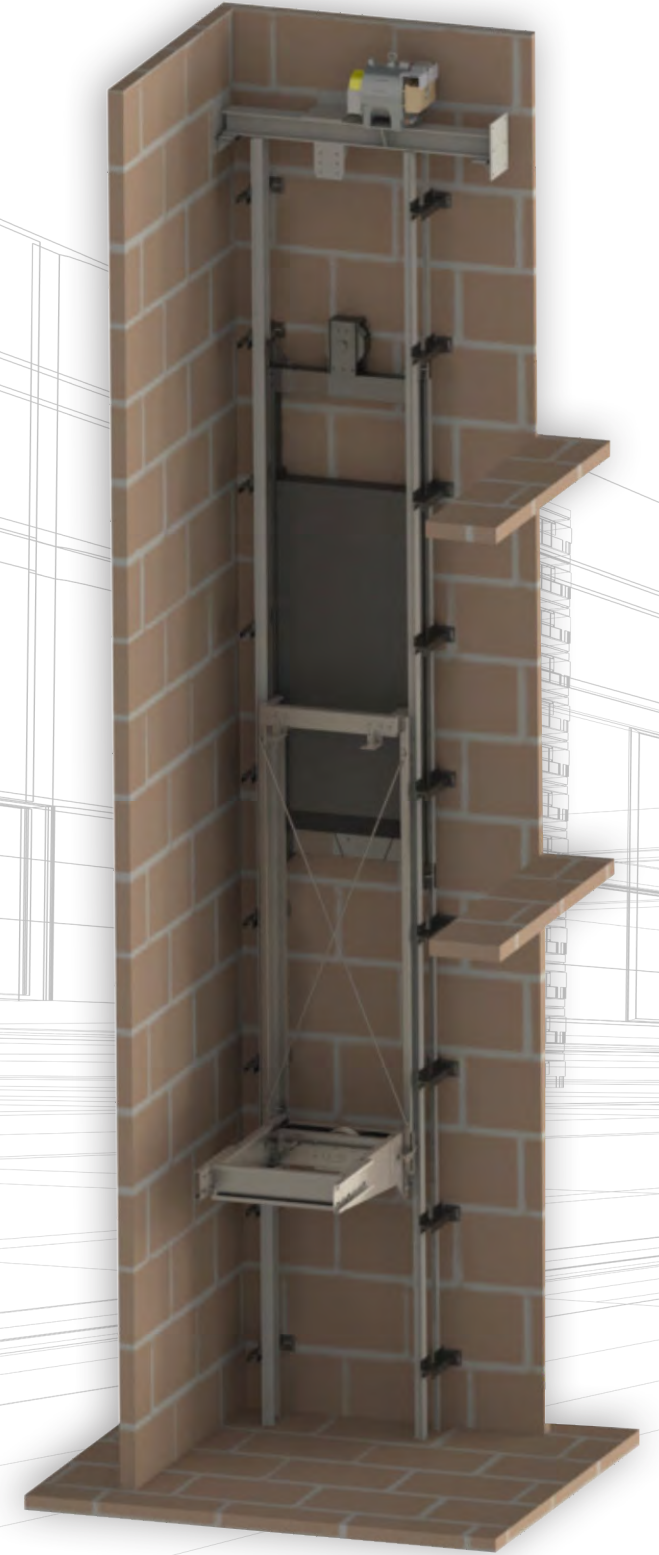


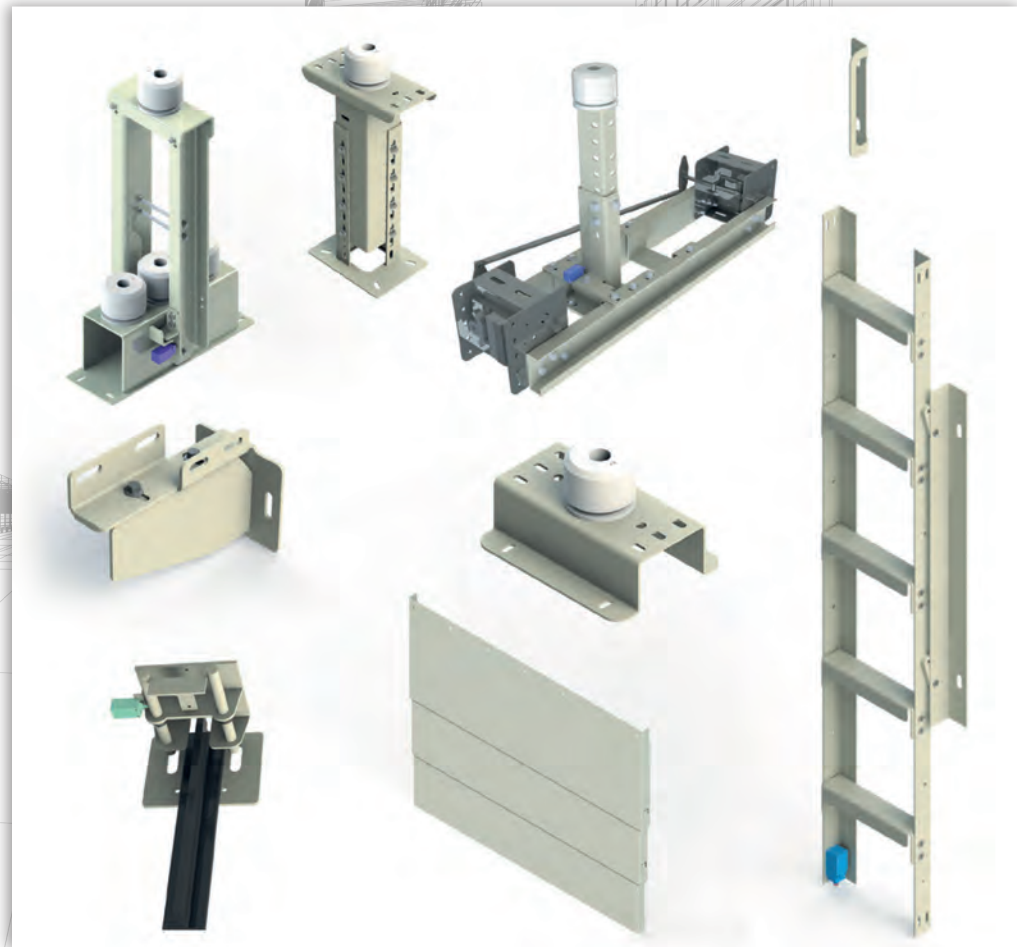
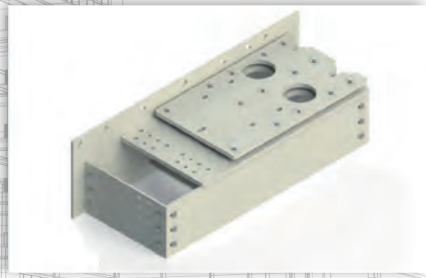
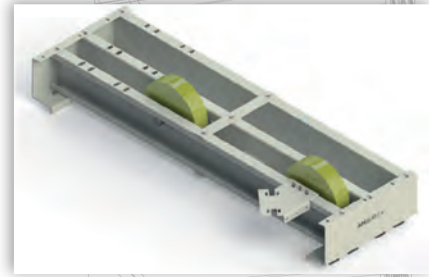
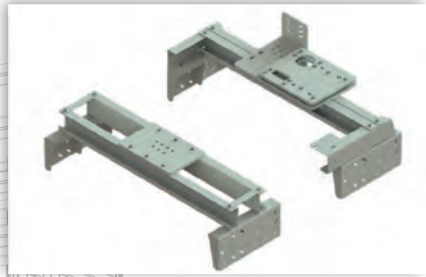
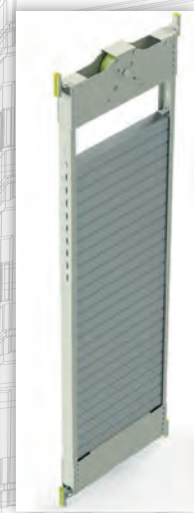
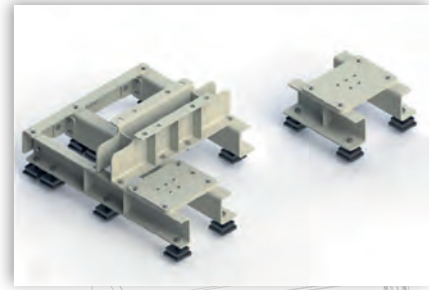
CSK 104



SİSTEMLER  
SYSTEMS

**HIZ**  
ASANSÖR



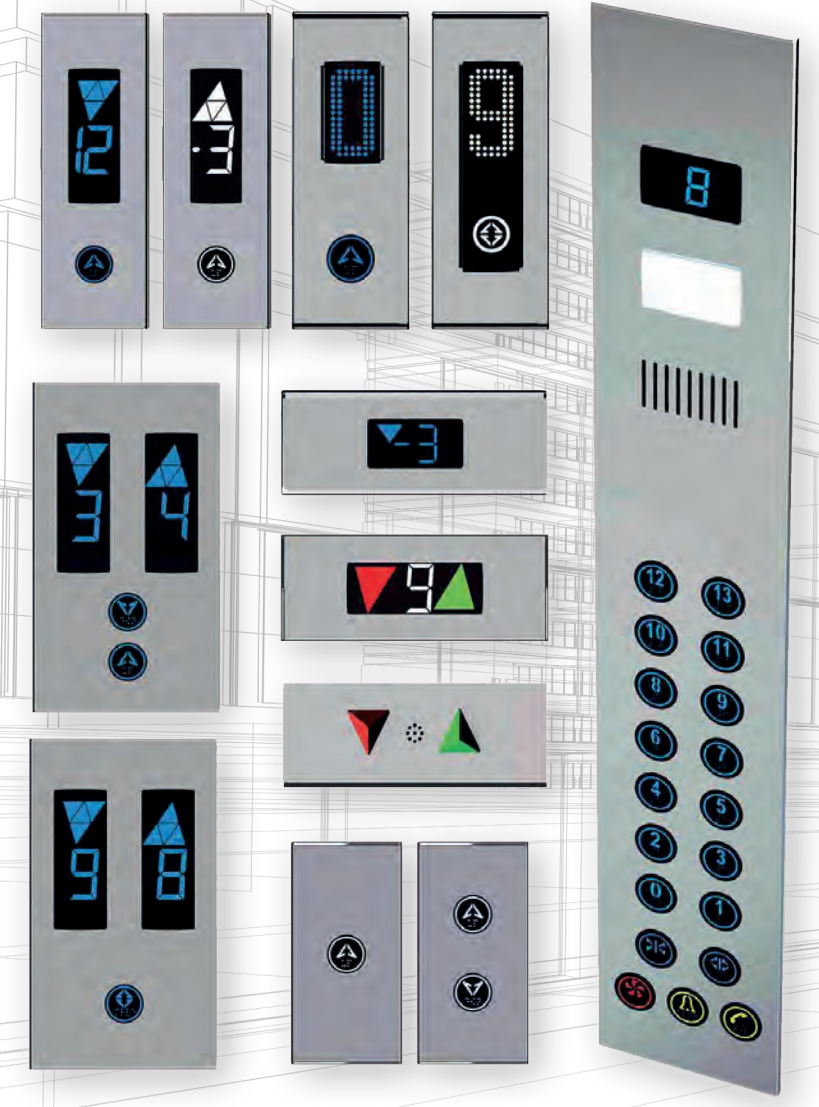


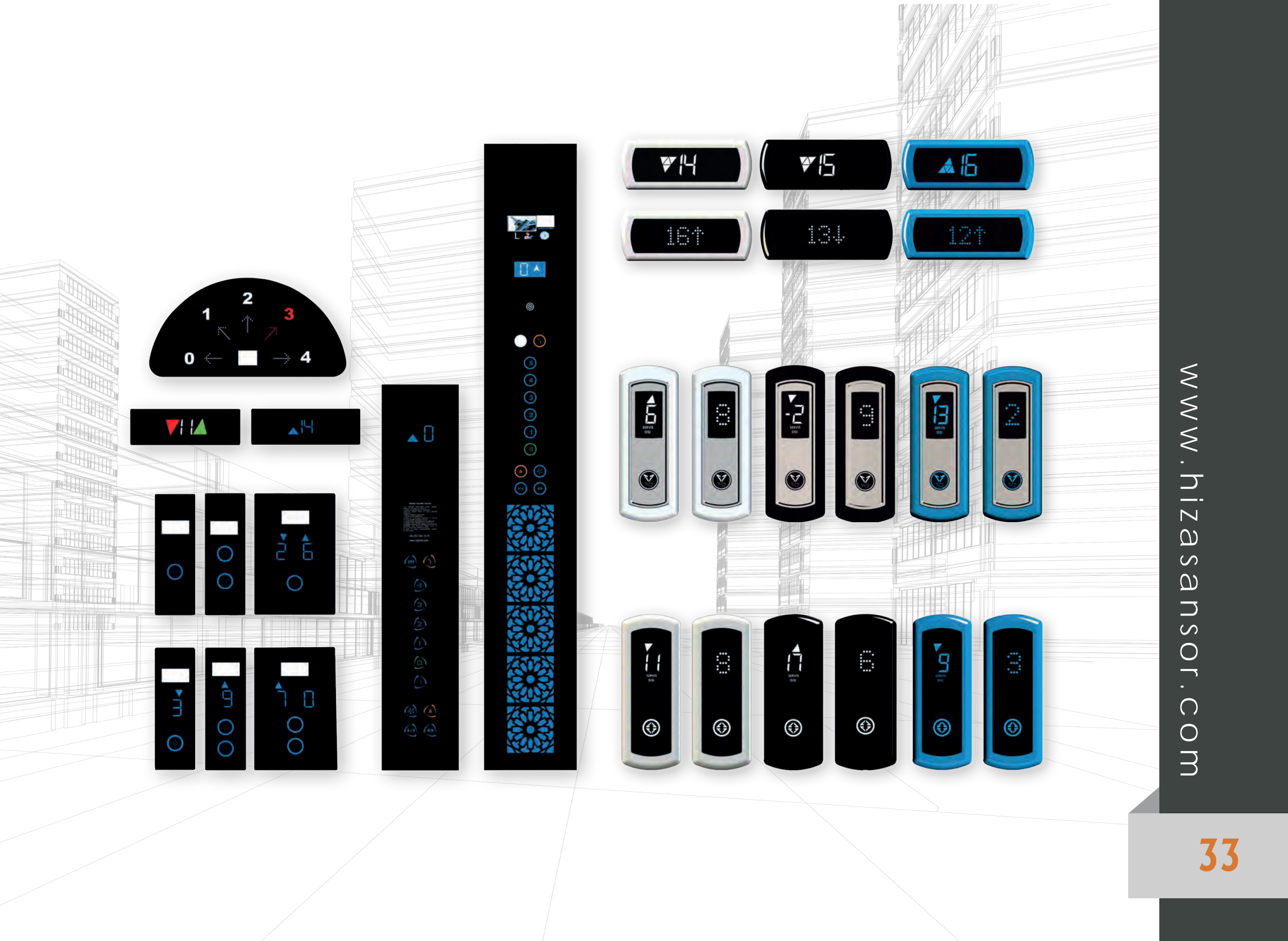
KAT-KABİN  
PANELLERİ  
ÜST GÖSTERGELER

BUTONLAR  
BUTTONS

LANDING-CAR  
PANELS

**HIZ**  
ASANSÖR



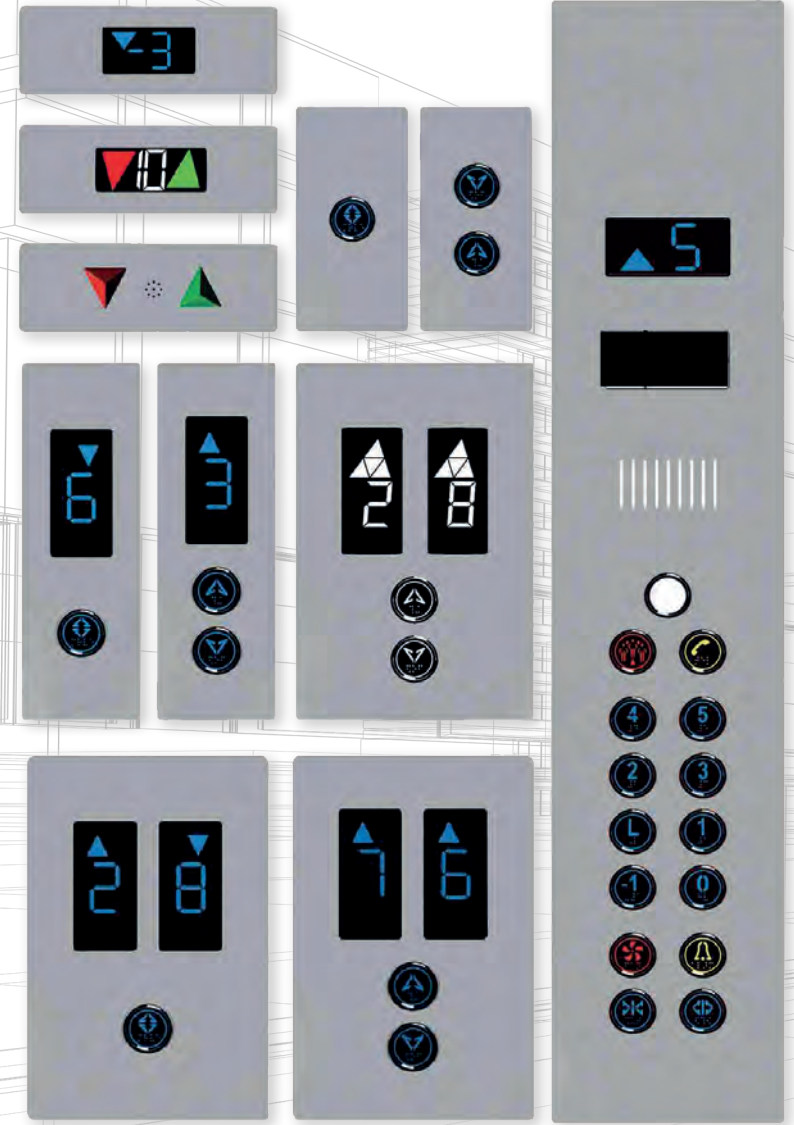


KAT-KABİN  
PANELLERİ  
ÜST GÖSTERGELER

BUTONLAR  
BUTTONS

LANDING-CAR  
PANELS

**HIZ**  
ASANSÖR



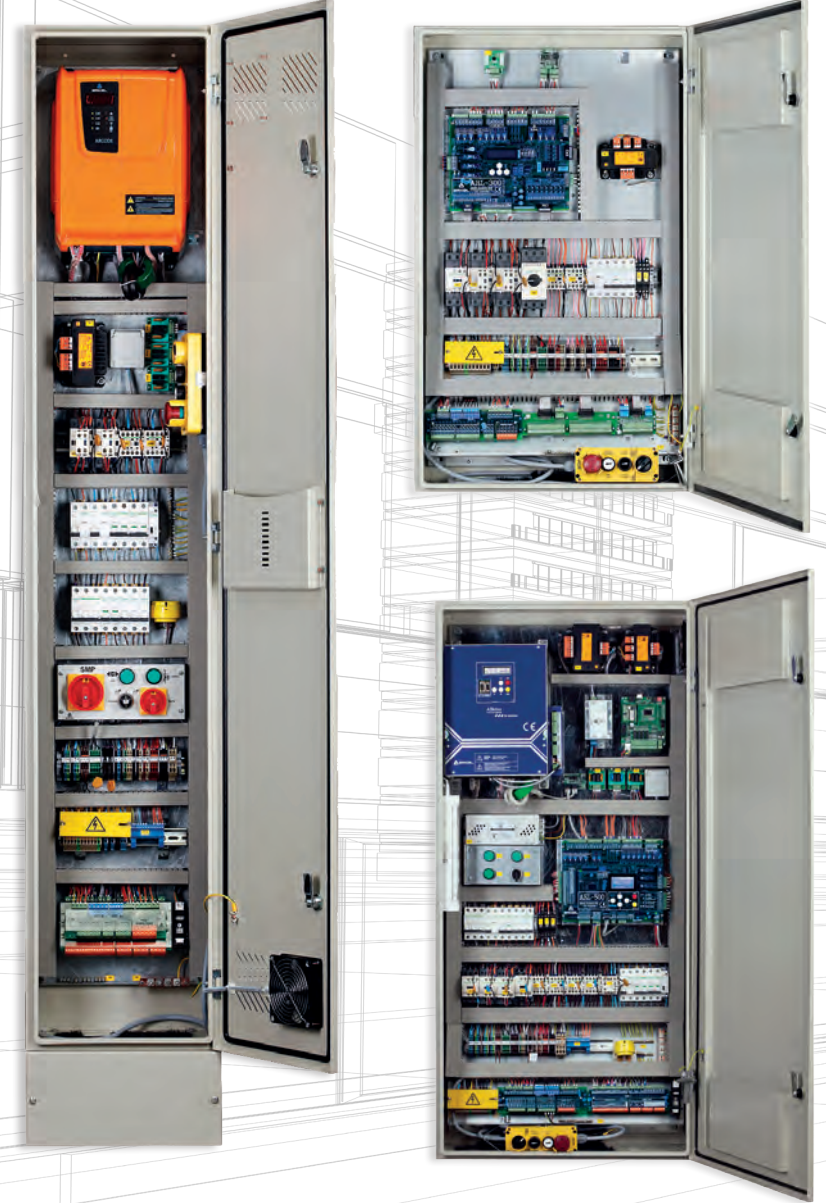


REVİZYON SETİ

KUMANDA PANOLARI  
CONTROL PANELS

REVISION SET

**HIZ**  
ASANSÖR





MAKİNE MOTORLAR  
MACHINES MOTORS

**HIZ**  
ASANSÖR



AKIŞ



EKER



NAGEL



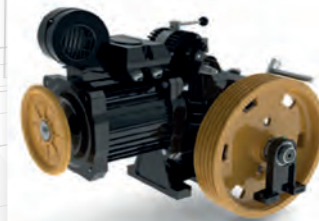
AKAR



ÖZBEK



ASTES



ARK



CLINDAS



AKIŞ



ALBERTO SASSI



ALBERTO SASSI



SCHINDLER



AKAR



MONTANARI



MONTANARI



SICOR



EKER



WITTUR



WITTUR



GEM



CSAG



ZIEHL-ABEGG



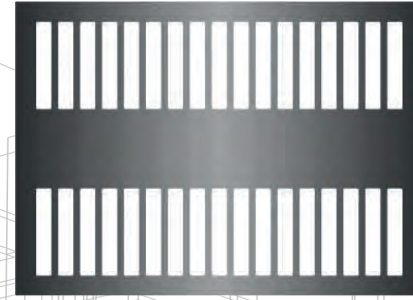
LAFERT



KARSAKAL

TAVAN  
CEILING

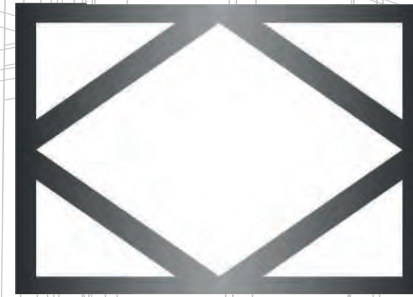
**HIZ**  
ASANSÖR



TV101



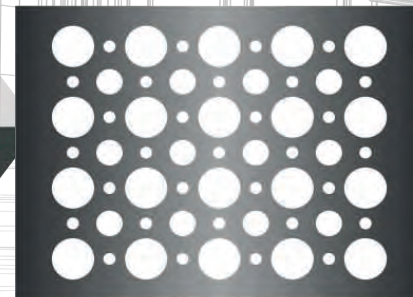
TV102



TV106



TV107



TV111



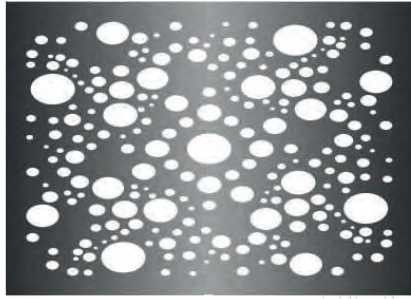
TV112



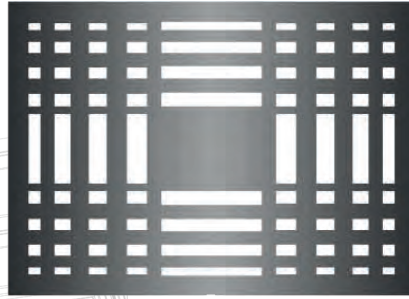
TV116



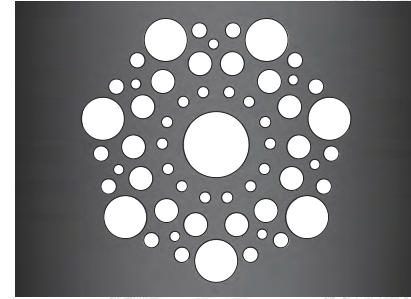
TV117



TV103



TV104



TV105



TV108



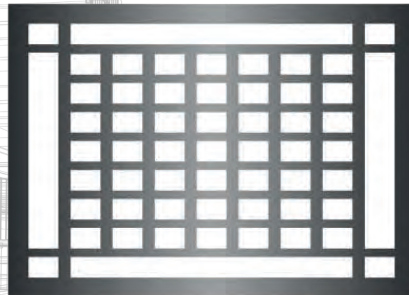
TV109



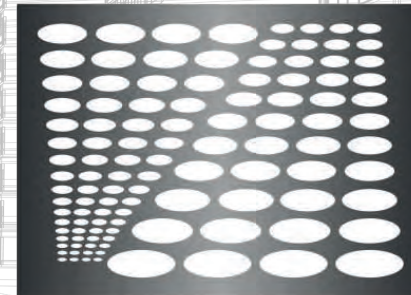
TV110



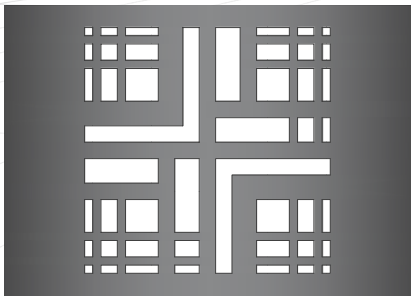
TV113



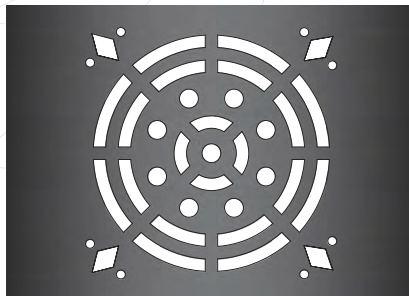
TV114



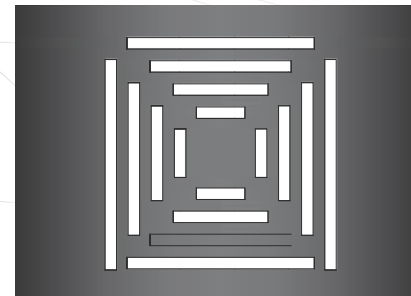
TV115



TV118



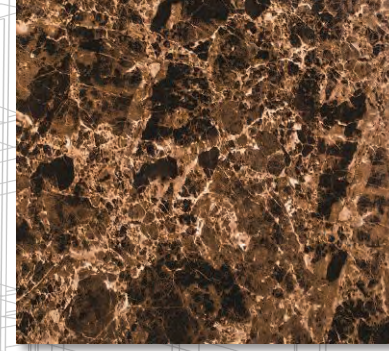
TV119



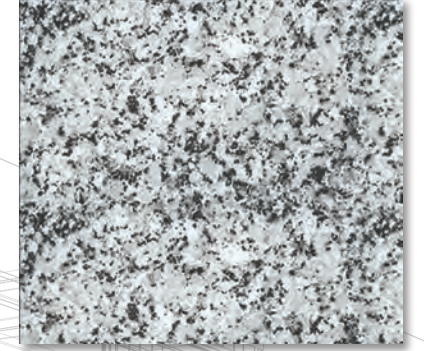
TV120

**TABAN**  
BASE

**HIZ**  
ASANSÖR



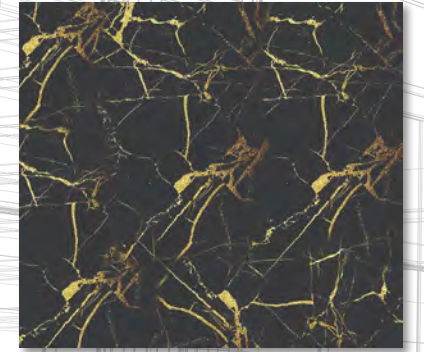
TB101



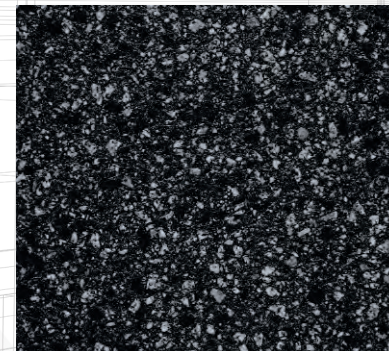
TB102



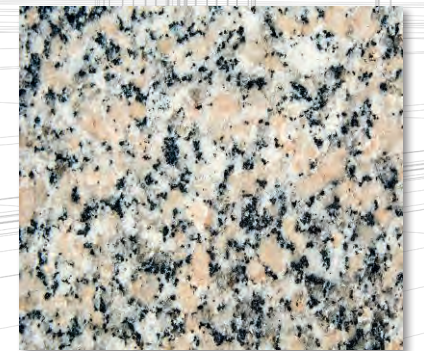
TB107



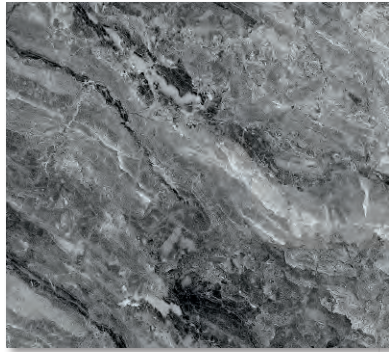
TB108



TB113



TB114



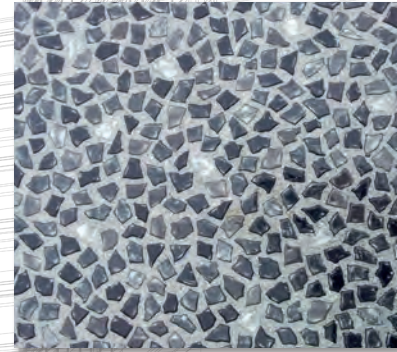
TB103



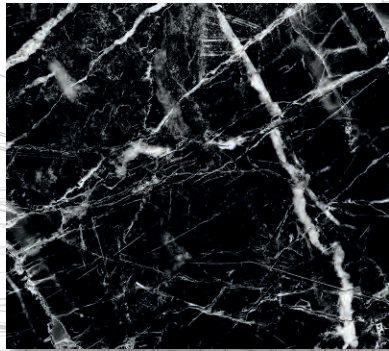
TB104



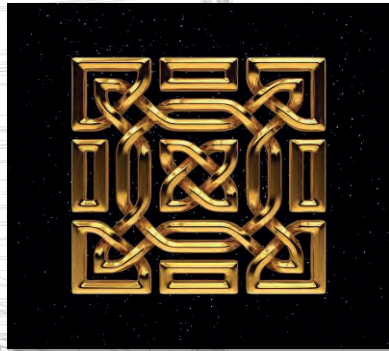
TB105



TB106



TB109



TB110



TB111



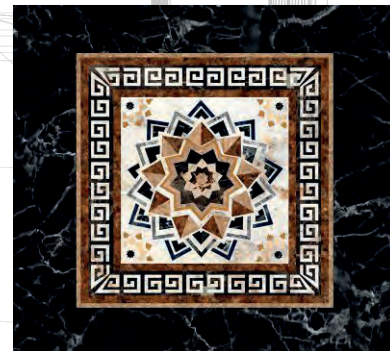
TB112



TB115



TB116



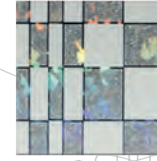
TB117



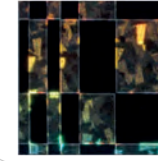
TB118

KAPLAMA  
COVERING

HIZ  
ASANSÖR



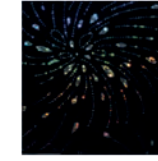
576



577



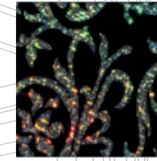
694



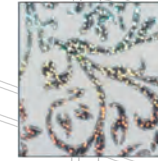
695



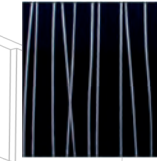
395



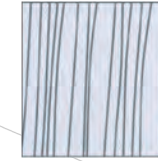
398



397



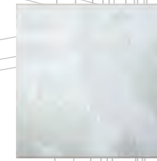
170



143



578



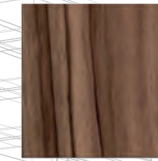
142



169



ABANOZ



MİLANO



LATİN CEVİZ



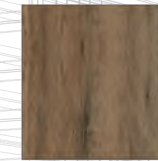
ZEYTİN



CHESTERFIELD  
MEŞE



ALMAN MEŞE



BUDAK MEŞE



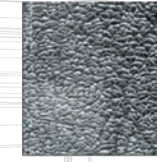
RAFIA



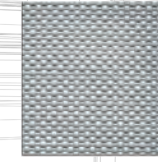
SATINE



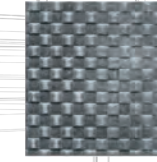
AYNA



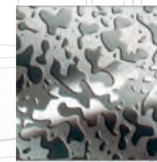
DERİ



NOKTA



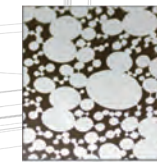
KARE



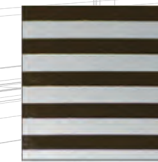
DM - 05



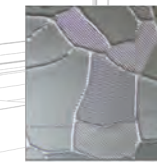
DM - 15



DM - 16



DM - 23



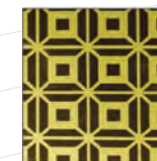
DM - MZK



DG - 03



DG - 07



DG - 10



DG - 20



DG - 26



DB 101



DB 102



DB 103



DB 104

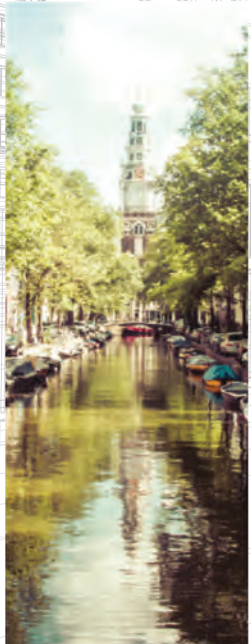


DB 105



DB 106

**DIJİTAL  
BASKILAR  
DIGITAL  
PRINTS**



DB 107



DB 108



DB 109



DB 110



DB 111



DB 112

**YEDEK PARÇALAR**  
SPARE PARTS

**HIZ**  
ASANSÖR





ASANSÖRLE İLGİLİ TÜM  
İHTİYAÇLARINIZA  
**HIZ**'LI ÇÖZÜMLER...

KAHVE İÇMEYE BEKLİYORUZ...



**MONŞARJ**  
**MONCHARGE**

**HIZ**  
**ASANSÖR**

